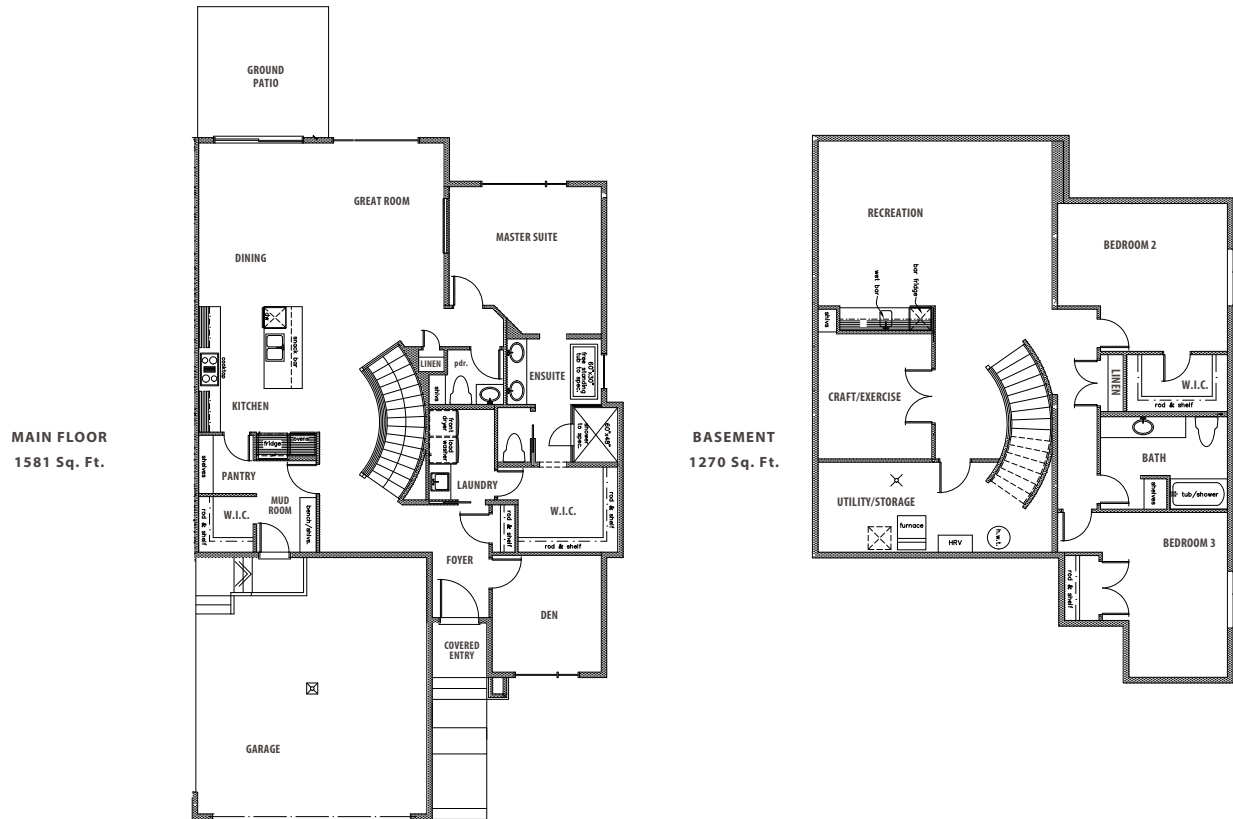




The
ELEANOR
4616 KNIGHT POINT SW

The
ELEANOR
 4616 KNIGHT POINT SW



[THE FACTS]

HOME FEATURES/OPTIONS

- 1581 Sq. Ft.
- 3 bedrooms
- 2.5 bathrooms

- 6" solid concrete party wall c/w air gap both sides complete with Roxul insulation for superior sound and fire barrier system
- Double car garage c/w floor drain and ceiling height for future car lift
- Exposed aggregate steps, sidewalk, driveway and rear patio
- EIFS air barrier acrylic stucco system c/w additional stone and faux wood siding details
- Black exterior windows
- 10' main floor c/w 8' doors
- Upgraded black and gold plumbing fixtures
- Custom built ins for mudroom c/w walnut accents
- Walnut stair stringers and slimline railing c/w iron spindles
- Linear electric fireplace c/w walnut millwork and tile detail
- Wallpaper accents in the powder room including walnut floating shelves
- Curved stairwell wallpaper accent
- Stainless steel KitchenAid appliance package
- Custom walk in closet including 8 drawers with walk through access to laundry room
- Ensuite c/w freestanding tub and zero threshold tiled shower and 10mm glass
- Navien tankless water heater
- Electric in floor heat for the ensuite and basement bath
- Basement development including wet bar
- Basement linear electric fireplace c/w walnut millwork details